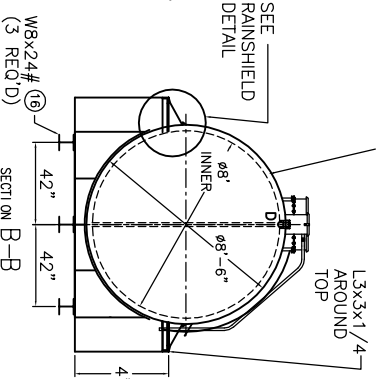
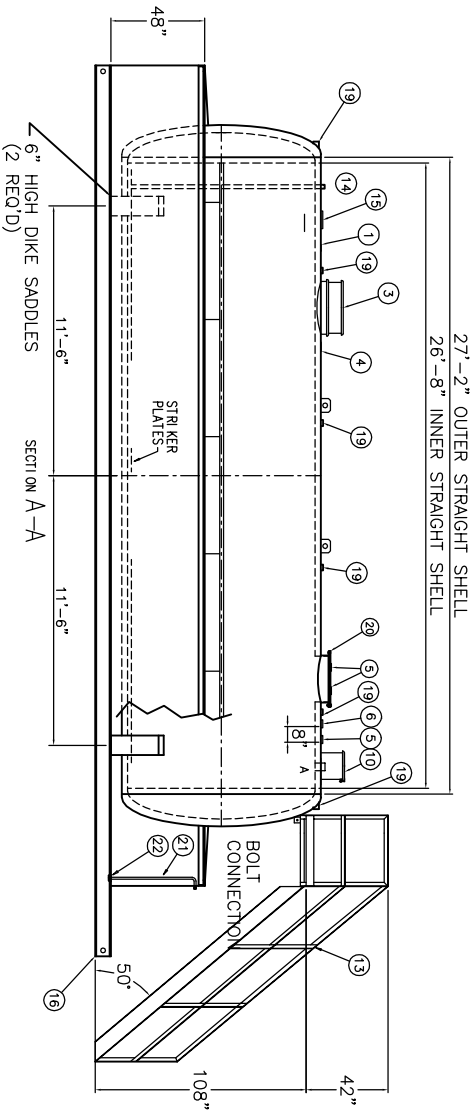
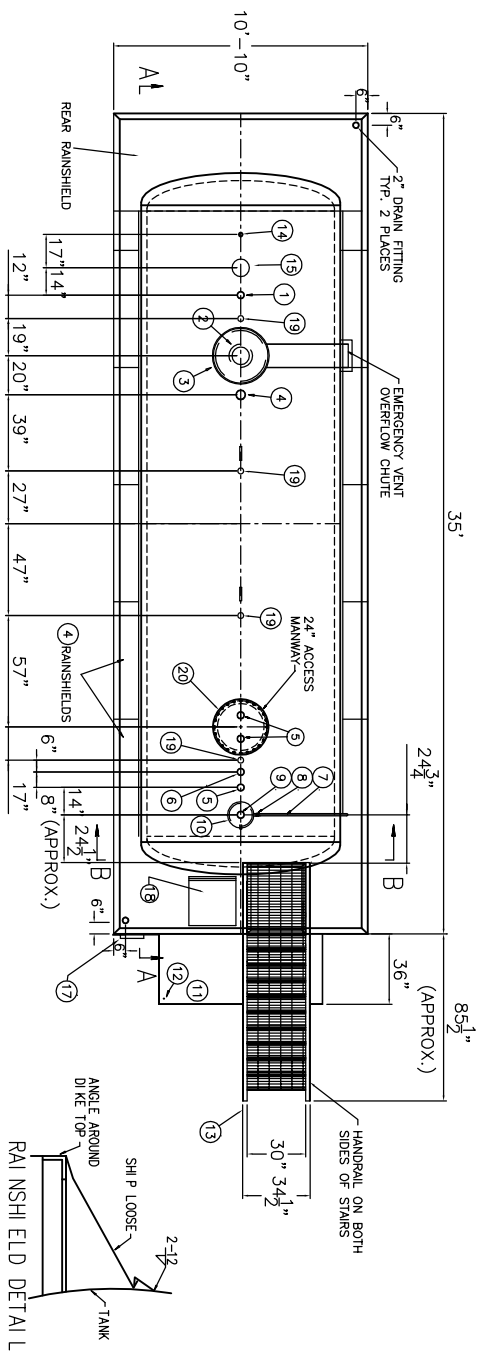


SHIP LOOSE

8" - 8 OZ. EMERGENCY VENT  
VENT DEFLECTOR ASSEMBLY  
STAIRS & PLATFORM  
RAIN SHIELDS



3" LIGHT INSULATION  
ON MATERIAL WITHIN  
THE INTERSPACE

SPECIFICATIONS	
TANK	
CAPACITY - 10,000 GALLON	
TANK MATERIAL - MILD CARBON STEEL	
THICKNESS INNER-HEAD - 5/16" STD FLG'D & DISHED, SHELL - 1/4"	
THICKNESS OUTER-HEAD - 5/16" STD FLG'D & DISHED, SHELL 1/4"	
CONSTRUCTION - INNER & OUTER - LAP WELD OUTSIDE ONLY	
TANK TEST - INNER - 20PSIG HYDROTEST, OUTER - 5 PSIG AIR	
INT. FINISH - NONE	
EXT. FINISH - SP6 BLAST, WHITE EPOXY PAINT SYSTEM	
LABEL - UL 142 & UL 2085, FIREGUARD, AND NEW YORK CITY DIKE	
CAPACITY - 11,000 GALLON	
MATERIAL - 1/4" MILD CARBON STEEL	
CONSTRUCTION - WELD IN AND OUT	
PAINT - ALL - SHOP PRIMER	
FITTINGS LEGEND	
1	3" NORMAL VENT FITTING
2	8" FLANGE W/ THREADED COMPANION FLANGE FOR PRIMARY EMERGENCY VENT USE
3	VENT DEFLECTOR ASSEMBLY - SHIPPED LOOSE
4	4" FITTING
5	3" FITTING
6	3" FOPLG
7	1" OVERFLOW PIPE - SHIPPED LOOSE
8	1" PIPE UNION
9	4" FILL FITTING
10	FILL CONTAINMENT CHAMBER
11	DRIP PAN PLATFORM WITH 2" LIP
12	1/2" DRAIN FITTING
13	STAIRS, PLATFORM & HANDRAIL - PAINT: SHOP PRIMER
14	2" MONITOR PIPE, MALE NPT END
15	8" FNPT FITTING THROUGH OUTER SHELL ONLY
16	8" MARK WITH SPECIAL WARNING LABEL INTERSPACE EMERGENCY VENT
17	8" WF (3)
18	RAINSHIELD ACCESS DOOR
19	2" FITTING THROUGH OUTER SHELL ONLY WITH CAST IRON PLUG - MFG USE ONLY
20	2 1/2" x 3/8" PLATE TIGHT BOLT MANWAY W/ 1/8" THICK NEO-CORK GASKET
21	3/4" PUMP-OUT PIPE
22	3" PIPE CAP SUMP

AREO-POWER®

TITLE  
10,000 GAL. AREO FUELER  
NEW YORK CITY FIREGUARD

U.S. PATENT # 4895272

CANADIAN PATENT APPLIED FOR

SCALE 3/16"=1"

DATE

DRAWN BY XXX

DWG. NO. FGDKRSPF10K

REV #

REV DATE

ALL RIGHTS RESERVED. THIS DRAWING OR ANY PART THEREOF MUST NOT BE REPRODUCED IN ANY FORM WITHOUT THE WRITTEN PERMISSION OF AREO-POWER UNITED FUELER, INC.