

DRAWING TITLE

**NEW YORK CITY**  
**15,000 GAL U/G**  
**TYPE 1 DW**

**GENERAL NOTES**

CAPACITY : 15000 GALLONS  
TYPE : 1 3RD DOUBLE WALL, UNDERGROUND, NY CITY  
NO. REQ. :  
MATERIAL : MILD CARBON STEEL  
TEST : 30 P.S.I. INNER 5 P.S.I. OUTER  
MIN. GAUGE OR THICKNESS (PER U.L. 58) :  
(BASED ON 60" MAX. BURIAL DEPTH)  
INNER HEADS : 3/8" OUTER HEADS : 1/4"  
INNER SHELL : 5/16" OUTER SHELL : 7/16"  
PAINT :

INTERIOR : NONE  
EXTERIOR : SP-6 BLAST, COAT WITH :  
 DORROCOOTE PLUS 15 MILS  
 POLYURETHANE 70 MILS  
 FIBERGLASS REINFORCED POLYESTER 125 MILS

CONSTRUCTION : FLANGED & DISHED HEADS, LAP WELD  
ALL EXTERIOR SEAMS ONLY

APPROVED LABELS : U.L. 58, NYC, NYCRR PART 614

S.T.I.P.3  
 ACT-100-U  
 ACT-100

- 15000 VOLT SPARK TEST PROVIDED AT FACTORY FOR POLYURETHANE MODELS  
- 30000 VOLT SPARK TEST PROVIDED AT FACTORY FOR F.R.P. MODELS

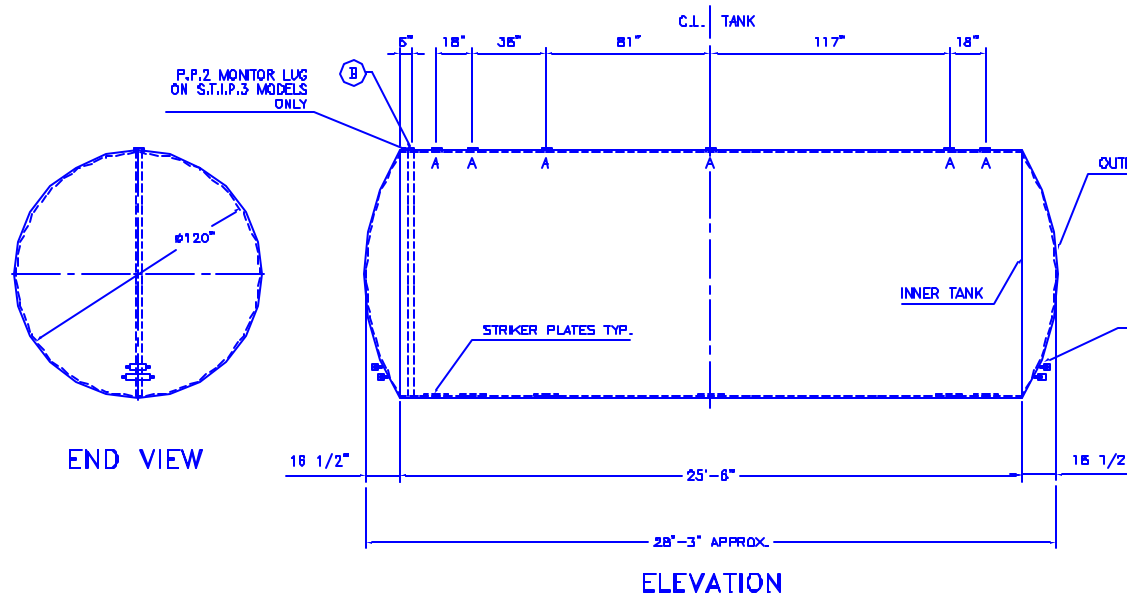
OUTER TANK

ANODES PROVIDED ON S.T.I.P.3 MODELS ONLY (1) 10 # ZINC & (1) 9 # MAG PER HEAD

**FITTING SCHEDULE**

A= 5" # NPT WITH 5" x 4" NYLON BUSHING  
B= 3" # NPT WITH 3" x 2" NYLON BUSHING  
(FITTING FOR LEAK DETECTION W/ INTERNAL PIPE)

NOTE :  
ALL RIGHTS RESERVED. THIS DRAWING OR ANY PART THEREOF MUST NOT BE REPRODUCED IN ANY FORM WITHOUT THE WRITTEN PERMISSION OF HIGHLAND TANK.  
HIGHLAND TANK SHALL BE RESPONSIBLE ONLY FOR ITEMS INDICATED ON THIS FABRICATION DRAWING UNLESS OTHERWISE NOTED. CUSTOMER IS RESPONSIBLE FOR VERIFYING CORRECTNESS OF SIZE / LOCATION OF FITTINGS , ACCESSORIES & COATINGS SHOWN ON THIS DRAWING



REV	DATE	BY	DESCRIPTION

ALL RIGHTS RESERVED. THIS DRAWING OR ANY PART THEREOF MUST NOT BE REPRODUCED IN ANY FORM WITHOUT WRITTEN PERMISSION OF AREO-POWER UNITIZED FUELER, INC.

DWG NO: 5K DWINYCUG1 20  
SCALE: 3/16"=1" DWN BY: HT  
SHEET: 1 DATE: 11/1/02