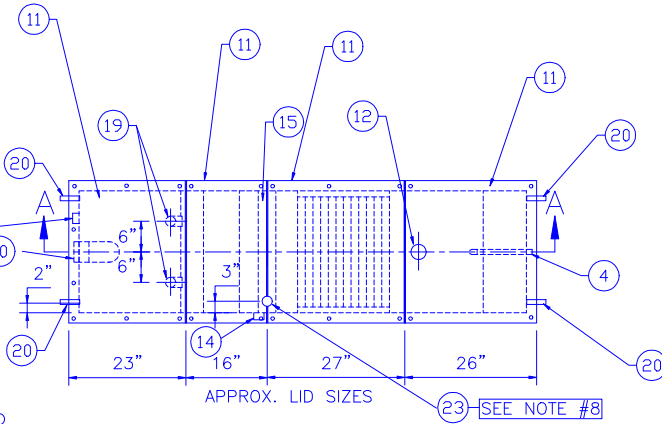


GENERAL SPECIFICATION

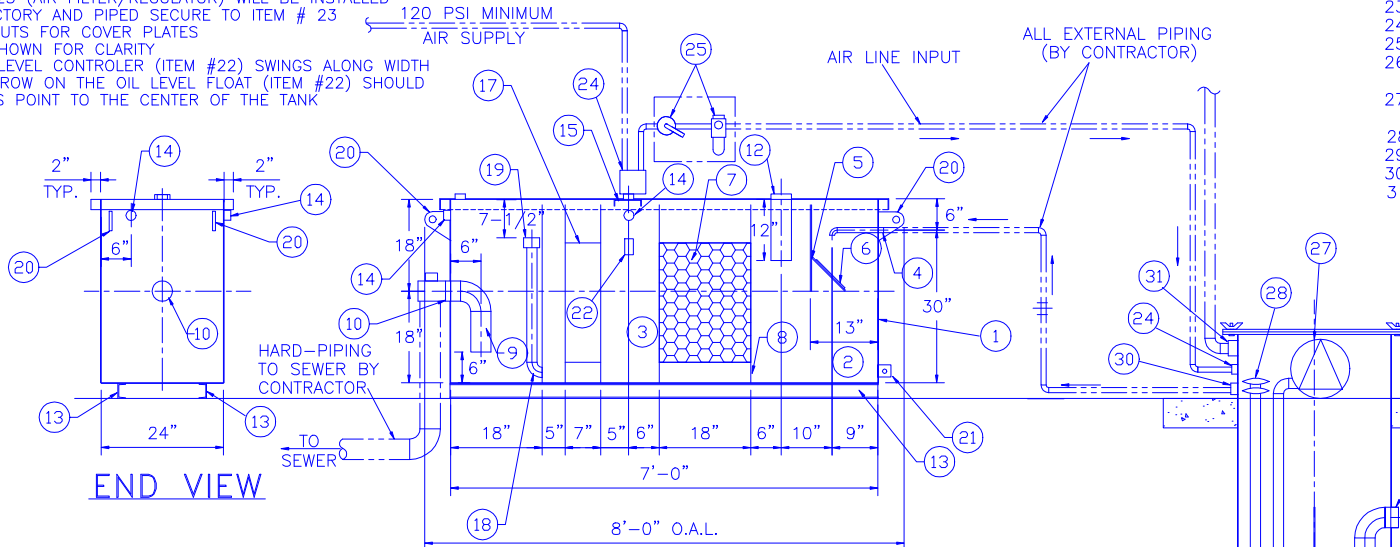
NO. REQ'D: ONE
 MODEL: AREO R-HT 300 W/ SUMP
 TEST: AIR 2.0 PSI
 GALLONS PER MINUTE: 25
 MAX. OIL STORAGE CAPACITY: 180 GALLONS
 GAUGE: 7GA THROUGHOUT
 ESTIMATED WEIGHT: 1,450 lbs.
 SURFACE PREP:
 SSSC NO.6 BLAST ALL EXTERIOR SURFACES
 COATING:
 INTERIOR- NONE
 EXTERIOR- EPOXY PRIMER & URETHANE
 TOP COAT (WHITE)
 CONSTRUCTION: BUTT FIT & WELD
 INSIDE & OUTSIDE SEAMS

NOTE:

1. ALL INTERNAL MATERIAL IS 10 GA.
2. ALL OPENINGS WILL HAVE STEEL PLUGS (SHIPPING INSTALLED W/ TANK)
3. LIFTING LUGS DO NOT HAVE REINFORCING PLATES, LUGS PLACED APPROX. 6" DOWN FROM LID
4. THE ENTIRE PARALLEL CORRUGATED FRAMWORK W/ PLATES CAN BE REMOVED FROM THE TANK. EACH INDIVIDUAL PLATE IS REMOVABLE FROM THE FRAMEWORK
5. ITEM #25 (AIR FILTER/REGULATOR) WILL BE INSTALLED AT FACTORY AND PIPED SECURE TO ITEM # 23
6. WING NUTS FOR COVER PLATES NOT SHOWN FOR CLARITY
7. FLOAT LEVEL CONTROLLER (ITEM #22) SWINGS ALONG WIDTH
8. THE ARROW ON THE OIL LEVEL FLOAT (ITEM #22) SHOULD ALWAYS POINT TO THE CENTER OF THE TANK



PLAN VIEW



SECTION A-A

CONTRACTOR FURNISHED EQUIPMENT

- A. 2"Ø VENT PIPING - NOT SHOWN
- B. EXTERNAL PUMP PIPING (WASTE WATER LINE)
- C. 2"Ø VENT
- D. 4"Ø OUTLET PIPING & FITTINGS
- E. 1/4" AIR LINE

STANDARD EQUIPMENT

1. OIL WATER SEPARATOR
2. SEDIMENT CHAMBER
3. OIL WATER SEPARATION CHAMBER
4. 1"Ø THREADED INLET W/ PVC ELBOW PIPING
5. VELOCITY HEAD DIFFUSION BAFFLE 10 GA
6. WEAR PLATE (1/4")
7. REMOVABLE PARALLEL PLASTIC COALESCER
8. SLUDGE BAFFLE (10GA)
9. 4"Ø OUTLET DOWNCOMER
10. 4"Ø THREADED OUTLET W/ 4"ØX6"LONG PIPE NIPPLE
11. (4) PIECE COVER (10 GA) W/ GASKET MATERIAL
12. 3"Ø HALF COUPLING (FTG. FOR OIL PUMP-OUT) W/ INTERNAL PIPE
13. C3 CHANNEL FOR SKID
14. 2"Ø NPT (FITTING FOR VENT)
15. 6" WIDE 7GA ACROSS TOP OF TANK W/ SENSOR FTG. WELDED INTO IT
16. 1/2"Ø SAMPLE VALVE (NOT SHOWN FOR CLARITY)
17. 6" COALESCER FRAMEWORK ONLY
18. 2"Ø 90° ELBOW W/ 2"Ø HALF COUPLING ON TOP W/ PVC PIPE
19. 2"Ø ADJUSTABLE FERNCO COUPLING
20. LIFTING LUGS W/-OUT REINFORCING PLATE
21. 3"X3"X1/4" FLAT W/ 1/2"Ø HOLE DRILLED IN CENTER (GROUNDING LUG)
22. OIL LEVEL FLOAT AIR CONTROL
23. 2"Ø NPT (FTG. FOR OIL FLOAT LEVEL CONTROLLER)
24. 1/4"Ø NPT (FTG. FOR AIR LINES)
25. FILTER / REGULATOR
26. 4"Ø FULL COUPLING (GRIT CHAMBER INLET) W/ ELBOW & DOWNCOMER PIPE
27. AIR OPERATED SELF CONTAINED GRIT CHAMBER PUMP W/ LEVEL CONTROLLER (AIR OPERATED)
28. LEVEL SENSOR CONTROLLER W/ DROP TUBE
29. GRIT CHAMBER SEE DETAIL DWG NO.990128M-B
30. 3/4"Ø NPT (FTG. FOR DISCHARGE)
31. 2"Ø NPT (FITTING FOR VENT)

**AREO-POWER
 UNITIZED FUELER, INC.**

OIL WATER SEPARATOR

103 SMITHTOWN BLVD. SMITHTOWN, NY 11787

ALL RIGHTS RESERVED. THIS DRAWING OR ANY PART THEREOF MUST NOT BE REPRODUCED IN ANY FORM WITHOUT WRITTEN PERMISSION OF ANY AREO-POWER UNITIZED FUELER, INC.

CUSTOMER:

QUOTE:

PROJECT:

SCALE: 1/2"=1'-0"	DATE: 6-9-99	DRN. BY:	CHKD BY:	DWG.# AREO R-HT300 W SMP
-------------------	--------------	----------	----------	--------------------------

1/4"X8"X8" STRIKER PLATE