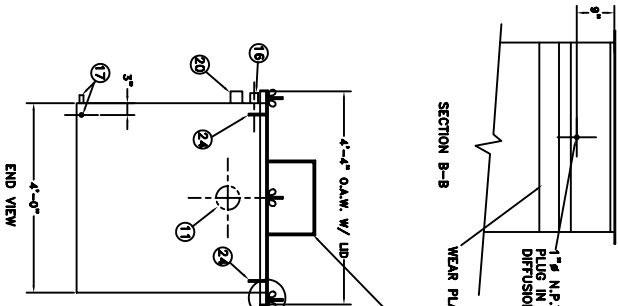


GENERAL NOTES

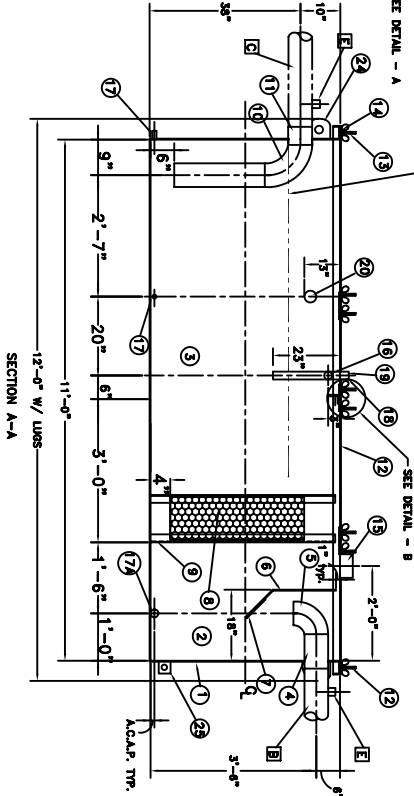
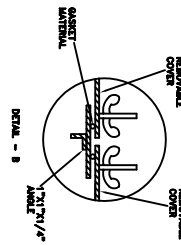
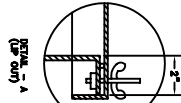
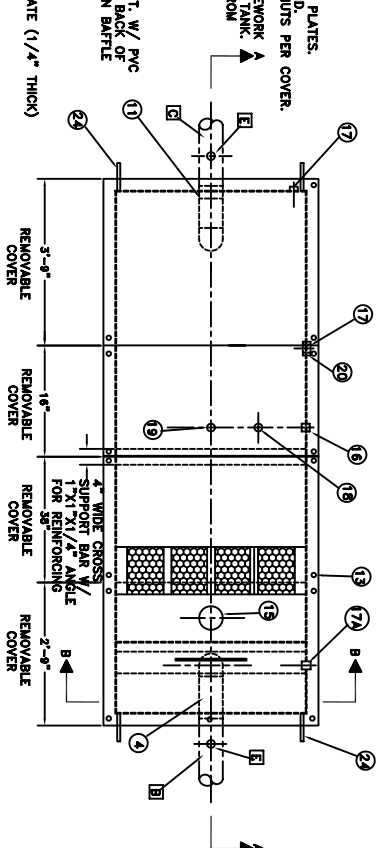
NO. REQ.: MODEL: AREO-15 ABOVEGROUND 1000 GALLONS O.W.S.
 FLOW RATE: 100 GPM
 TANK WALL THICKNESS: 7 GA
 TEST: AIR 2.0 PSI
 TANK WEIGHT: 4,450 LBS. (APPROX.)
 SURFACE PREP: S.S.P.C. NO. 6 BLAST ALL EXTERIOR SURFACES
 EXTERIOR COATING: EPOXY PRIMER & URETHANE TOPCOAT (WHITE)
 THICKNESS: 3 MILS
 INTERIOR COATING: CORROPROTE PW
 CONSTRUCTION: BUTT FIT AND WELD BOTH INSIDE AND OUTSIDE SEAMS

NOTE: 1. ALL FITTINGS IN TANK MUST BE SHIPPED WITH STEEL PLUGS

- LIFTING LUGS DO NOT HAVE REINFORCING PLATES.
- LUGS PLACED APPROX. 6" DOWN FROM LID.
- END COVERS HAVE (5) WING NUTS.
- THE ENTIRE PARALLEL CORRUGATED FRAMEWORK AT EACH LUGS CAN BE REMOVED FROM THE TANK. THE FRAMEWORK.



2. HANDLES REQUIRED (PER COVER)
 LIQUID LEVEL IN EFFLUENT CLEARWELL IS 13" DOWN



SECTION A-A

STANDARD EQUIPMENT

- OIL WATER SEPARATOR
- SEDIMENT CHAMBER
- SOIL WATER SEED INLET
- 6" PVC INLET NOZZLE
- VELOCITY HEAD DIFFUSION BAFFLE (SEE SECTION B-B) - 10 GA
- WEAR PLATE (1/4" THICK)
- REMOVABLE GROSS-FLOW PACK (8 PACKS-EACH 24" WIDE X 24" HIGH)
- SLUDGE BAFFLE (10 GA)
- SLUDGE BAFFLE (10 GA) COVER
- 11" 6" THREADED OUTLET
12. REMOVABLE COVERS 4-REQUIRED (10 GA) (CORROSION RESISTANT)
- NUTS AND BOLTS W/ LARGE WING NUTS (TYP.)
- GASKET MATERIAL (FOR EACH REMOVABLE COVER)
- 1" N.P.T. (CLEAN OUT)
- 1" N.P.T. (CLEAN OUT)
- 17A. 2" N.P.T. (DRAIN) W/ STEEL PLUG - SHIP LOOSE
18. 2" FULL COUPLING (FITTING FOR OIL PUMP-OUT) W/ PVC PLUG - SHIP LOOSE
19. 2" HALF COUPLING (FITTING FOR LEVEL SENSOR)
20. 3/4" FULL COUPLING (FITTING FOR OIL SKIMMER) W/ STEEL PLUG - SHIP LOOSE
25. 3" X 3" X 3/4" FLAT W/ 1/2" HOLE DRILLED IN CENTER (GROUNDING LUG)

CONTRACTOR FURNISHED EQUIP.

- A. 2" VENT PIPING - NOT SHOWN
- B. INLET PIPING AND FITTINGS
- C. OUTLET PIPING AND FITTINGS
- D. 1" CONDUIT, FITTINGS AND WIRING - NOT SHOWN
- E. 2" TEE (VENT)

OTHER OPTIONS AVAILABLE

- UPGRADE TO DOUBLE WALL TANK
- 10 PPM PERFORMANCE (IN LIEU OF 15 PPM).
- ADD SLUDGE HOPPER

AREO-POWER
 UNITIZED FUELER, INC.
 103 SMITHTOWN BLVD
 SMITHTOWN, NY 11787

AREO-POWER
 1000 GAL ABOVEGROUND
 SINGLE WALL RECTANGULAR
 OIL-WATER SEPARATOR

DRAWING TITLE

REV	DATE	BY	REVISION DESCRIPTION

CONSTRUCTION APPROVAL

PRINT NAME _____
 SIGNATURE _____
 DATE _____

DWG NO: 971203A
 SCALE: NTS DIM: BT: HT
 SHEET: 1 OF 1 DATE: 1/6/97

ALL RIGHTS RESERVED. THIS DRAWING OR REPRODUCTION IN ANY FORM WITHOUT WRITTEN PERMISSION OF AREO-POWER UNITIZED FUELER, INC.