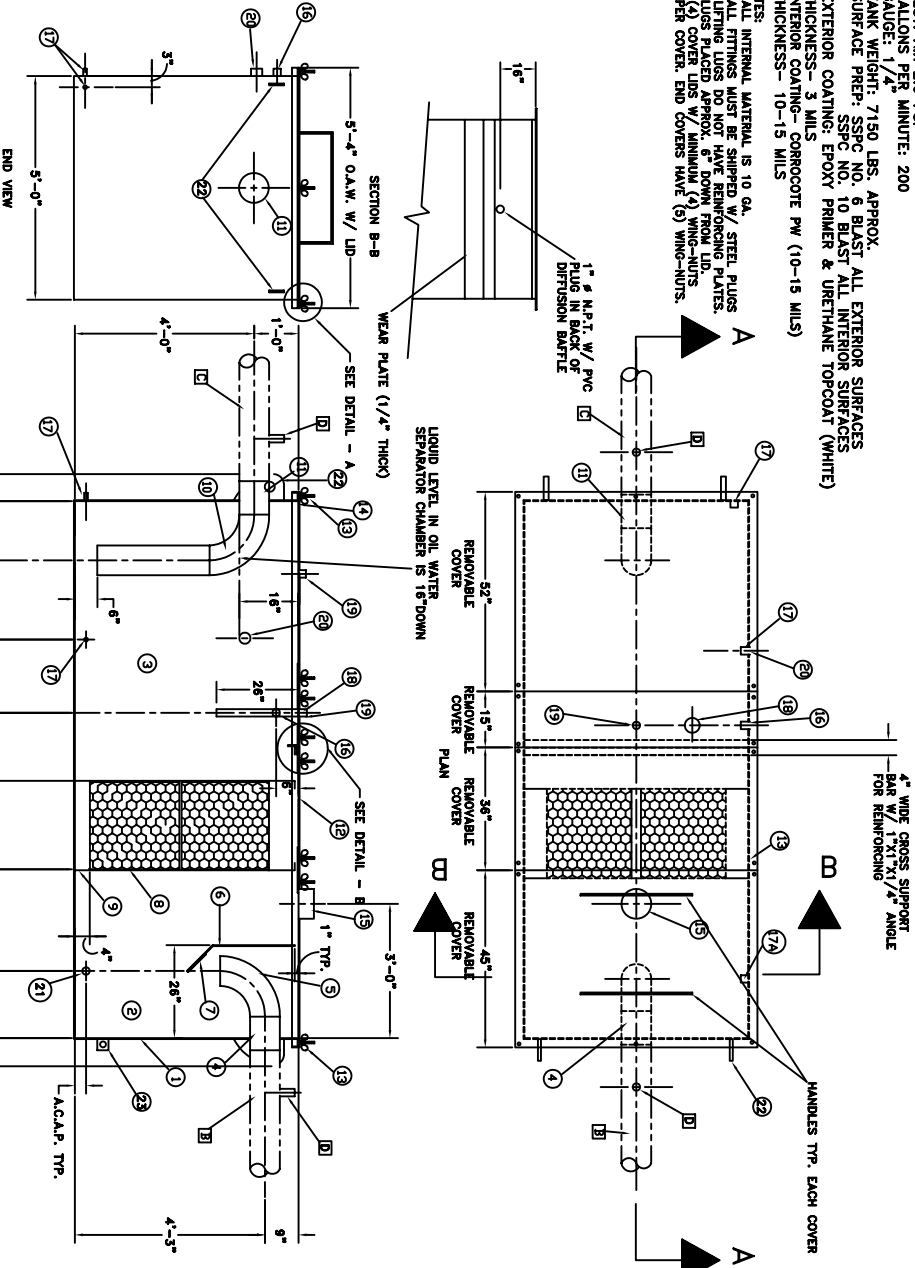


GENERAL SPECIFICATIONS

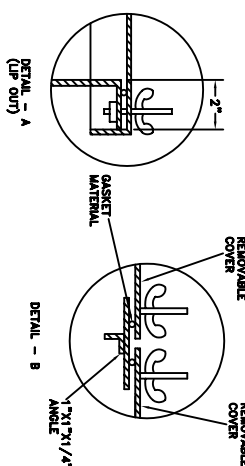
NO. REQ. ONE
 MODEL: ARO-15 ABOVEGROUND 2000 GALLONS OIL WATER SEPARATOR
 TESTS: AIR 2.0 PSI
 GAUGE: 1/4"
 TANK WEIGHT: 7150 LBS. APPROX.
 SURFACE PREP: SSPC NO. 6 BLAST ALL EXTERIOR SURFACES
 EXTERIOR COATING: EPOXY PRIMER & URETHANE TOPCOAT (WHITE)
 THICKNESS - 3 MILS
 INTERIOR COATING - CORROSCOTE PW (10-15 MILS)
 THICKNESS - 10-15 MILS

- NOTES:
 1. ALL INTERNAL MATERIAL IS 10 GA. STEEL PLUGS
 2. LIFTING LUGS DO NOT HAVE BEARING FLATES.
 3. LUGS PLACED APPROX. 8" DOWN FROM LID.
 4. (A) COVER LUGS W/ MINIMUM (4) WING-NUTS PER COVER. END COVERS HAVE (5) WING-NUTS.



- STANDARD EQUIPMENT
1. OIL WATER SEPARATOR
 2. SEDIMENT CHAMBER
 3. OIL WATER SEPARATION CHAMBER
 4. 8" PVC W/ 1/2" FLOW PIPING
 5. 8" PVC W/ 1/2" FLOW BATTLE (SEE SECTION B-B) - 10 GA
 6. REMOVABLE CROSS-FLOW PACK - (4 PACKS REQUIRED)
 7. WEAR PLATE (1/4" THICK)
 8. SLUDGE BATTLE - 10 GA
 9. PVC COUPLER DOWN CORNER PIPE
 10. 8" N.P.T. (VENT)
 11. REMOVABLE COVERS (4)-REQUIRED (10 GA) (TRP.)
 12. NUTS & BOLTS W/ LARGE WING NUTS (CORROSION RESISTANT)
 13. GASKET MATERIAL (FOR EACH REMOVABLE COVER)
 14. 1" N.P.T. (VENT)
 15. 2" N.P.T. (VENT)
 16. 1" N.P.T. (DRAIN W/ STEEL PLUG)
 17. 1" N.P.T. FULL COUPLING (FITTING FOR OIL PUMP-OUT)
 18. 2" N.P.T. FULL COUPLING (FITTING FOR SKIMMER)
 19. 3" W/ STEEL PLUG - SHIP LOOSE
 20. 2" N.P.T. (SLUDGE DRAIN) W/ STEEL PLUG
 21. 2" N.P.T. (SLUDGE DRAIN) W/ STEEL PLUG
 22. LIFTING LUGS FLAT W/ 1/2" HOLE DRILLED IN CENTER
 23. 3/8" X 1/4" FLAT W/ 1/2" HOLE DRILLED IN CENTER (ROUNDING LUG)

- CONTRACTOR FURNISHED EQUIP.
- A. 2" VENT PIPING - NOT SHOWN
 B. INLET PIPING AND FITTINGS
 C. 2" VENT PIPING AND FITTINGS



OTHER OPTIONS AVAILABLE

- UPGRADE TO DOUBLE WALL TANK
- 10 PPM PERFORMANCE (IN LIEU OF 15 PPM).
- ADD SLUDGE HOPPER

ARO-POWER
 UNITED FUELER, INC.
 103 SMITHTON BLVD
 SMITHTON, NY 11787

DRAWING TITLE
ARO-POWER
 2000 GAL ABOVEGROUND
 SINGLE WALL RECTANGULAR
 OIL-WATER SEPARATOR

REV	DATE	BY	REVISION DESCRIPTION

CONSTRUCTION APPROVAL

PRINT NAME _____

SIGNATURE _____

DATE _____

DWG NO: **971211C**

SCALE: NTS DWG BY: HT

SHEET: 1 OF 1 DATE: 1/6/97

ALL RIGHTS RESERVED. THIS DRAWING OR REPRODUCTION IN ANY FORM WITHOUT WRITTEN PERMISSION OF ARO-POWER UNITED FUELER, INC.