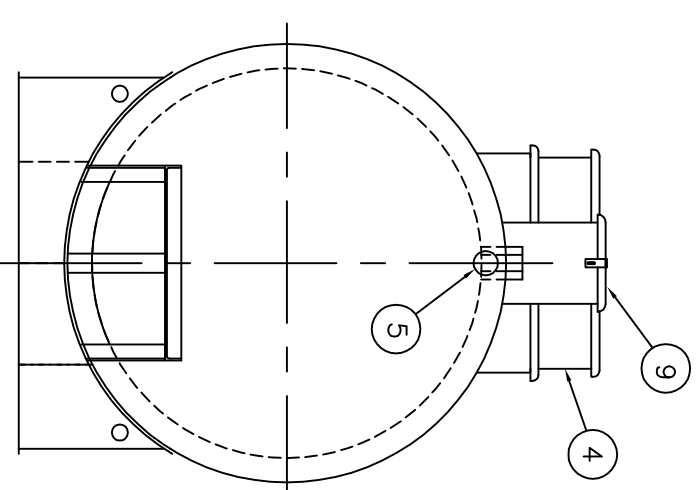
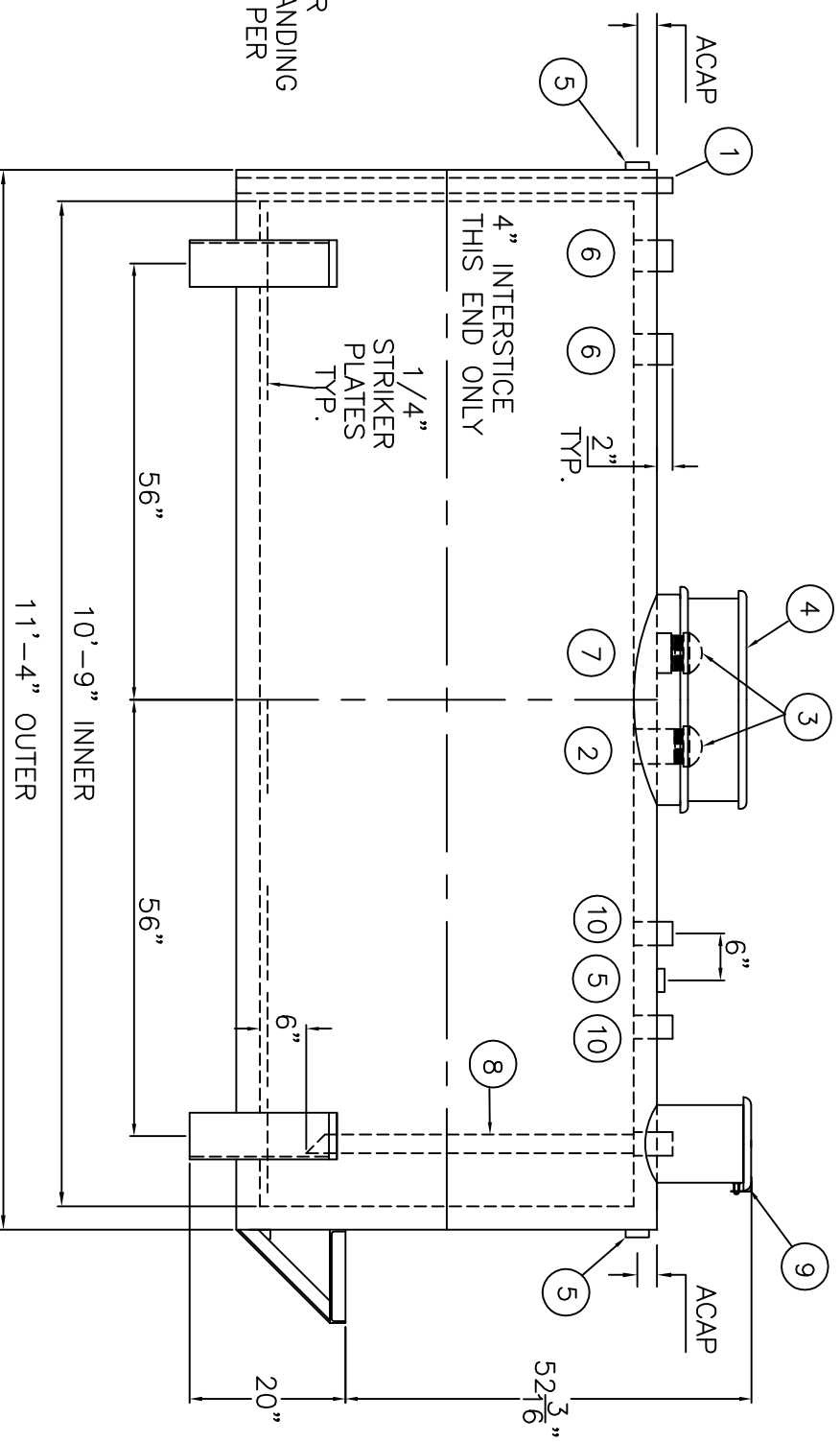
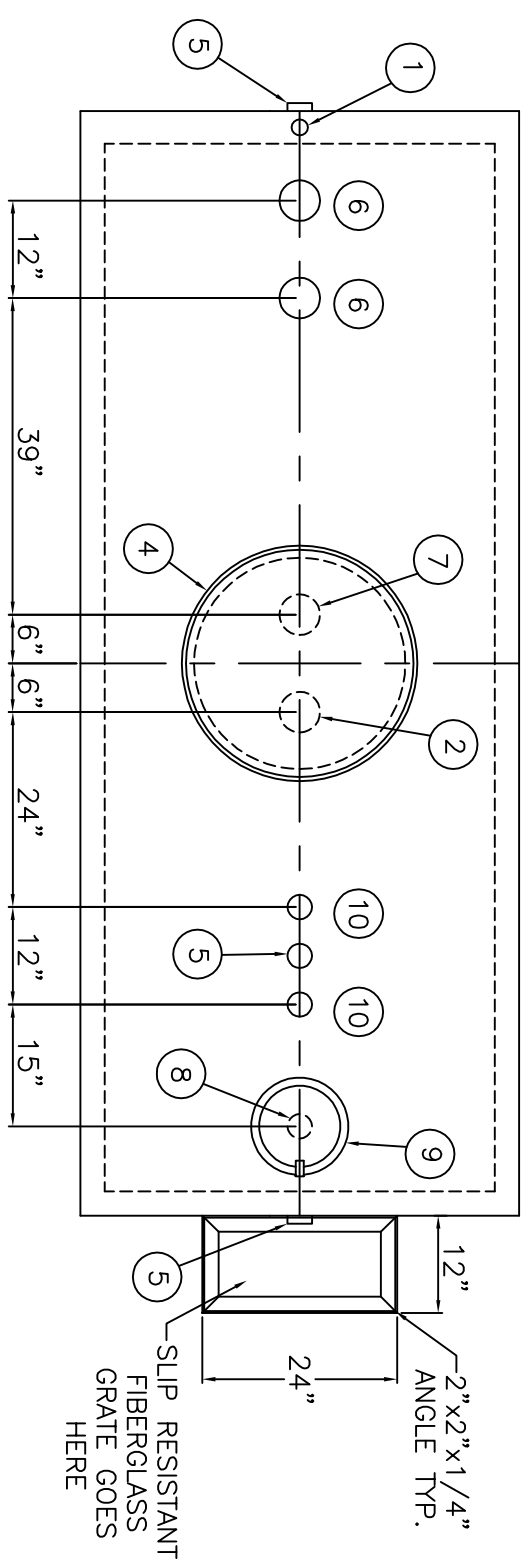
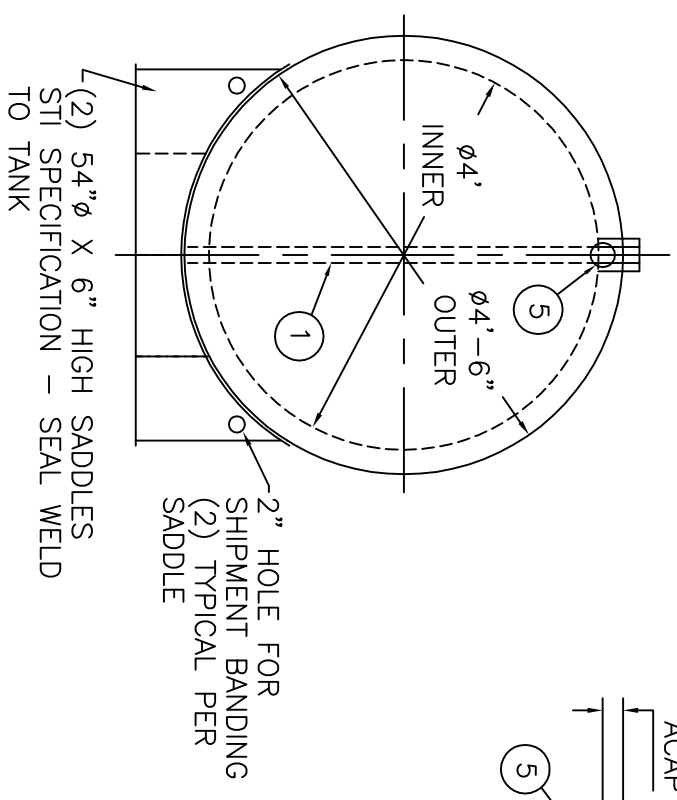
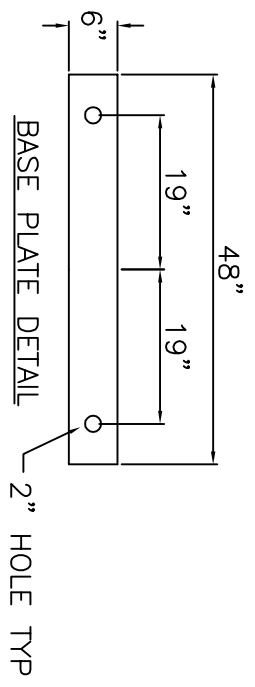


SHIP LOOSE
 (2) 6" MALE THREADED EMERGENCY VENTS

NOTE: ALL RIGHTS RESERVED. THIS DRAWING MUST NOT BE REPRODUCED IN ANY FORM WITHOUT THE WRITTEN PERMISSION OF AREO-POWER®. AREO-POWER® SHALL BE RESPONSIBLE ONLY FOR ITEMS INDICATED ON THIS FABRICATION DRAWING UNLESS OTHERWISE NOTED. CUSTOMER IS RESPONSIBLE FOR VERIFYING CORRECTNESS OF SIZE AND LOCATION OF FITTINGS, ACCESSORIES, AND COATINGS SHOWN ON THIS DRAWING.
 TOUCH UP OF FINISHED PAINT IS REQUIRED BY INSTALLATION CONTRACTOR. TOUCH UP PAINT SHIPPED WITH TANK.

NOTES
 1. ALL DIMENSIONS APPROXIMATE



ITEM	QTY	DESCRIPTION
1	1	2" INTERSTITIAL MONITOR PIPE - MALE NPT END
2	1	6" FEMALE FIREGUARD COUPLING - FOR PRIMARY EMERGENCY VENT USE
3	2	6" EMERGENCY VENT
4	1	VENT DEFLECTOR ASSEMBLY
5	3	2" FITTING THROUGH OUTER SHELL ONLY WITH CAST IRON PLUG- MFG USE ONLY

ITEM	QTY	DESCRIPTION	ITEM	QTY	DESCRIPTION
6	2	4" FEMALE FIREGUARD COUPLING	10	2	2" FEMALE FIREGUARD COUPLING
7	1	6" FITTING THROUGH OUTER SHELL ONLY, MARK WITH SPECIAL WARNING LABEL INTERSTITIAL EMERGENCY VENT USE ONLY	11	-	-
8	1	2" FEMALE FIREGUARD COUPLING w/ 2" DROP PIPE TO WITHIN 6" OF THE BOTTOM OF THE TANK WITH 45° MITER	12	-	-
9	1	FILL CONTAINMENT CHAMBER			

3" LIGHTWEIGHT INSULATION MATERIAL WITHIN INTERSTICE

DESIGN DATA

CAPACITY :	1000 GALLONS
TYPE:	FIREGUARD® CYLINDRICAL
FIREGUARD® IS A TRADEMARK OF WITH THE STEEL TANK INSTITUTE	
NO. REQ. --	--
OPERATING PRESSURE --	ATMOSPHERIC
TANK MATERIAL --	MILD CARBON STEEL
THICKNESS -- INNER --	7 GAUGE
THICKNESS -- OUTER --	7 GAUGE
MIN. GAUGE OR THICKNESS (PER U.L. 2085)	
CONSTRUCTION -- INNER --	LAP WELD OUTSIDE ONLY
CONSTRUCTION -- OUTER --	LAP WELD OUTSIDE ONLY
TANK TEST --	PER UL 2085
INT. FINISH --	NONE
EXT. FINISH --	SP-6 BLAST, FINISH PAINT WHITE
LABEL --	UL 2085 AND FIREGUARD® PER sti

AREO-POWER®

U.S. PATENT # 4895272 CANADIAN PATENT APPLIED FOR

1000 GALLON 48" Ø CYL. FIREGUARD®

PATENT: 5,695,089 PATENT: 5,809,650

CUSTOMER:

PROJECT:

QUOTE NO:

SCALE: 1/2" = 12"

DATE:

DWG. BY:

CHK'D BY:

DWG. NO:

AP1000FG48CYL