

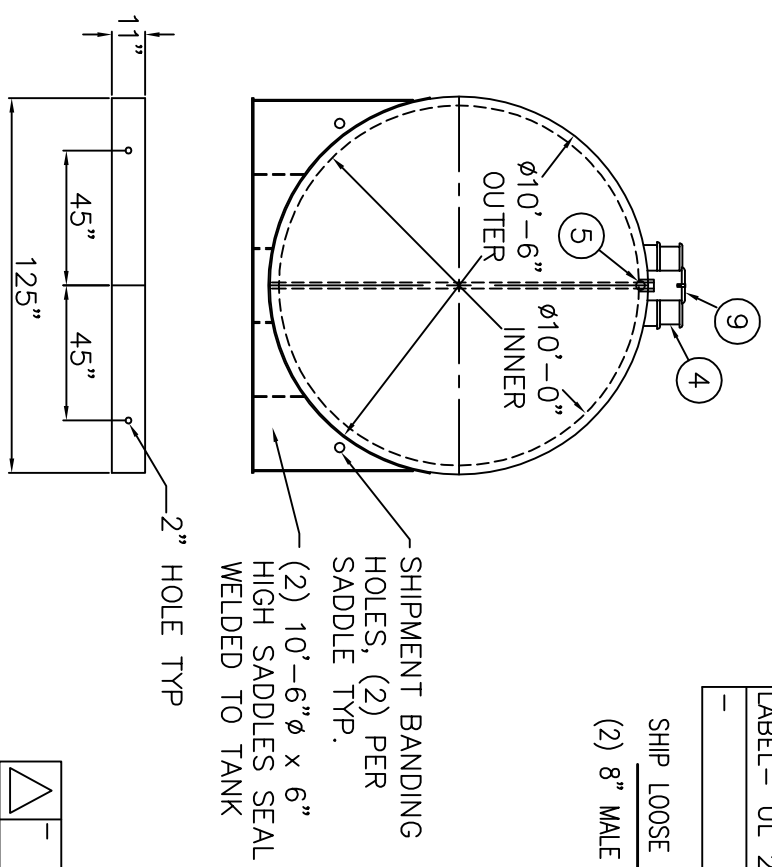
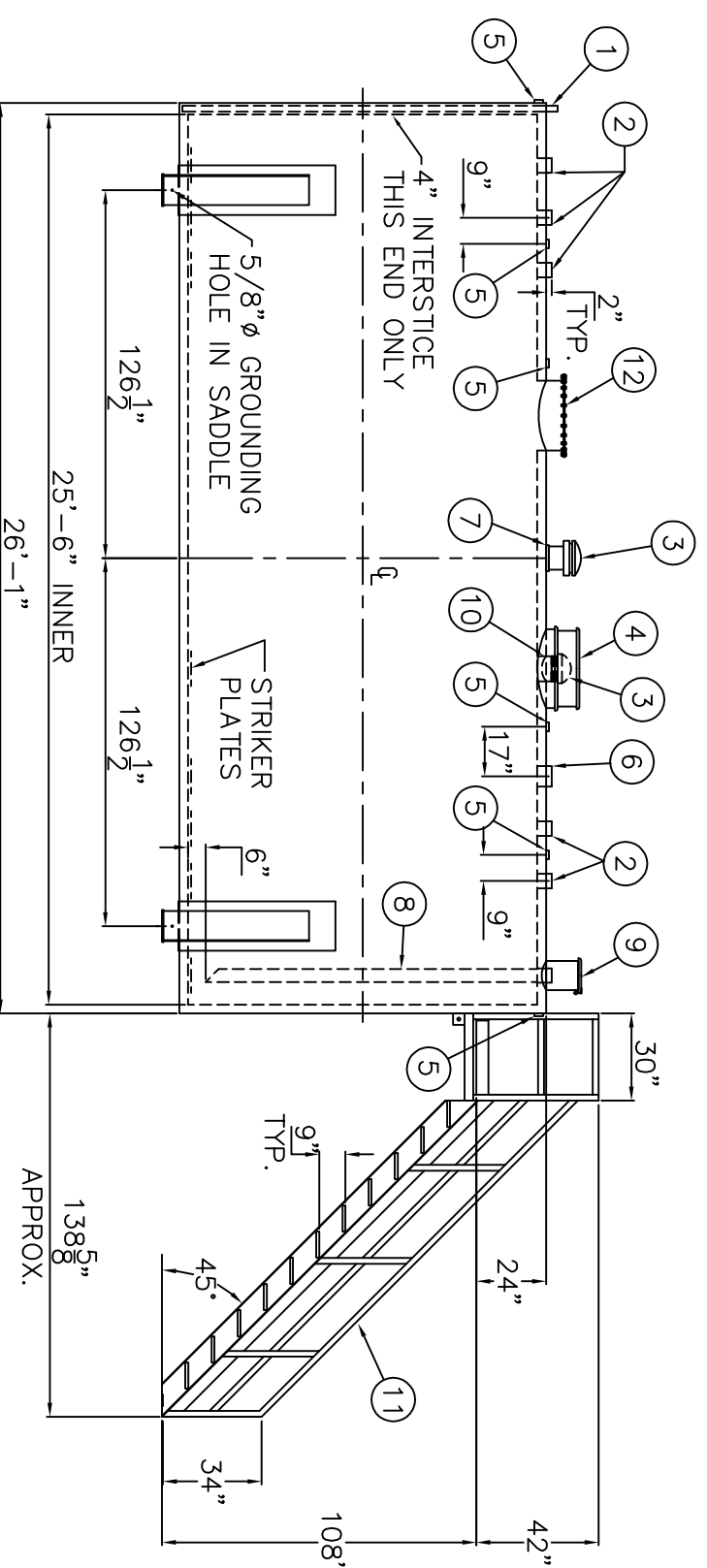
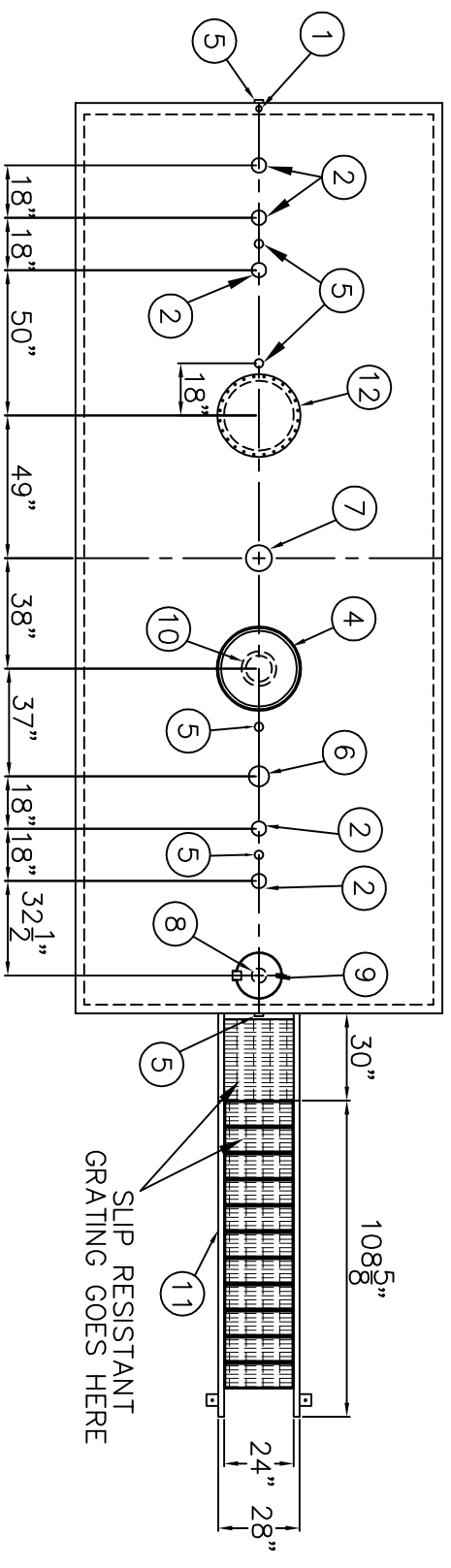
DESIGN DATA

CAPACITY : 15,000 GALLONS
 TYPE: FIREGUARD® CYLINDRICAL
 FIREGUARD® IS A TRADEMARK OF THE STEEL TANK INSTITUTE
 NO. REQ. --
 OPERATING PRESSURE -- ATMOSPHERIC
 TANK MATERIAL -- MILD CARBON STEEL
 THICKNESS -- INNER -- HEADS: 5/16", SHELL: 1/4"
 THICKNESS -- OUTER -- HEADS: 5/16", SHELL: 1/4"
 MIN. GAUGE OR THICKNESS (PER U.L. 2085)
 CONSTRUCTION -- INNER -- LAP WELD OUTSIDE ONLY
 CONSTRUCTION -- OUTER -- LAP WELD OUTSIDE ONLY
 TANK TEST -- PER UL 2085

INT. FINISH -- NONE
 EXT. FINISH -- SP-6 BLAST, FINISH PAINT WHITE
 LABEL-- UL 2085 AND FIREGUARD® PER st

SHIP LOOSE
 (2) 8" MALE THREADED EMERGENCY VENTS

NOTE: ALL RIGHTS RESERVED. THIS DRAWING MUST NOT BE REPRODUCED IN ANY FORM WITHOUT THE WRITTEN PERMISSION OF HIGHLAND TANK®. HIGHLAND TANK® SHALL BE RESPONSIBLE ONLY FOR ITEMS INDICATED ON THIS FABRICATION DRAWING UNLESS OTHERWISE NOTED. CUSTOMER IS RESPONSIBLE FOR VERIFYING CORRECTNESS OF SIZE AND LOCATION OF FITTINGS, ACCESSORIES, AND COATINGS SHOWN ON THIS DRAWING.
 TOUCH UP OF FINISHED PAINT IS REQUIRED BY INSTALLATION CONTRACTOR. TOUCH UP PAINT SHIPPED WITH TANK.



ITEM	QTY	DESCRIPTION	ITEM	QTY	DESCRIPTION	ITEM	QTY	DESCRIPTION
1	1	2" MONITOR PIPE WITH MALE NPT END	7	1	8" FITTING THROUGH OUTER SHELL ONLY, MARK WITH SPECIAL WARNING LABEL INTERSTITIAL EMERGENCY VENT USE ONLY	11	1	24" WIDE x 108" STAIRS w/ 1" FIBERGLASS GRATING, BOLT TO TANK, PAINT: SAFETY YELLOW, SHIP LOOSE, INSTALLATION ON SITE BY OTHERS.
2	5	4" FEMALE FG COUPLING	8	1	4" FEMALE FG COUPLING w/ 4" DROP PIPE TO WITHIN 6" OF THE BOTTOM OF THE TANK, MITER 45°	12	1	24" x 1/4" PLATE TIGHT BOLT MANWAY WITH 1/8" THICK NEO-CORK GASKET
3	2	8" EMERGENCY VENT	9	1	FILL CONTAINMENT CHAMBER			
4	1	EMERGENCY VENT PROTECTION HOOD	10	1	8" FEMALE FG COUPLING (PRIMARY VENT USE)			
5	6	2" FITTING THROUGH OUTER SHELL ONLY WITH CAST IRON PLUG-- MFG USE ONLY						
6	1	6" FEMALE FG COUPLING						

AREO-POWER®
 PATENT NUMBER 5346093
 15,000 GAL 120" Ø CYL. FIREGUARD®

PATENT: 5,695,089 PATENT: 5,809,650
 CUSTOMER:
 PROJECT:
 QUOTE NO:
 SCALE: 1/4"=1'-0"
 DATE: DWG. BY: DWG. NO: AP15000FC120CYL