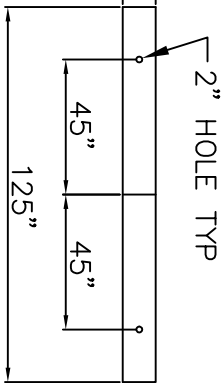


NOTE: ALL RIGHTS RESERVED. THIS DRAWING MUST NOT BE REPRODUCED IN ANY FORM WITHOUT THE WRITTEN PERMISSION OF HIGHLAND TANK®. HIGHLAND TANK® SHALL BE RESPONSIBLE ONLY FOR ITEMS INDICATED ON THIS FABRICATION DRAWING UNLESS OTHERWISE NOTED. CUSTOMER IS RESPONSIBLE FOR VERIFYING CORRECTNESS OF SIZE AND LOCATION OF FITTINGS, ACCESSORIES, AND COATINGS SHOWN ON THIS DRAWING.

TOUCH UP OF FINISHED PAINT IS REQUIRED BY INSTALLATION CONTRACTOR. TOUCH UP PAINT SHIPPED WITH TANK.

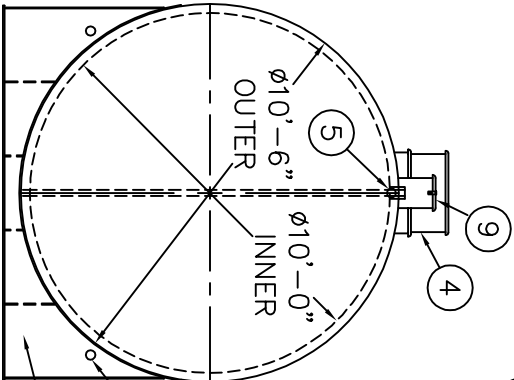
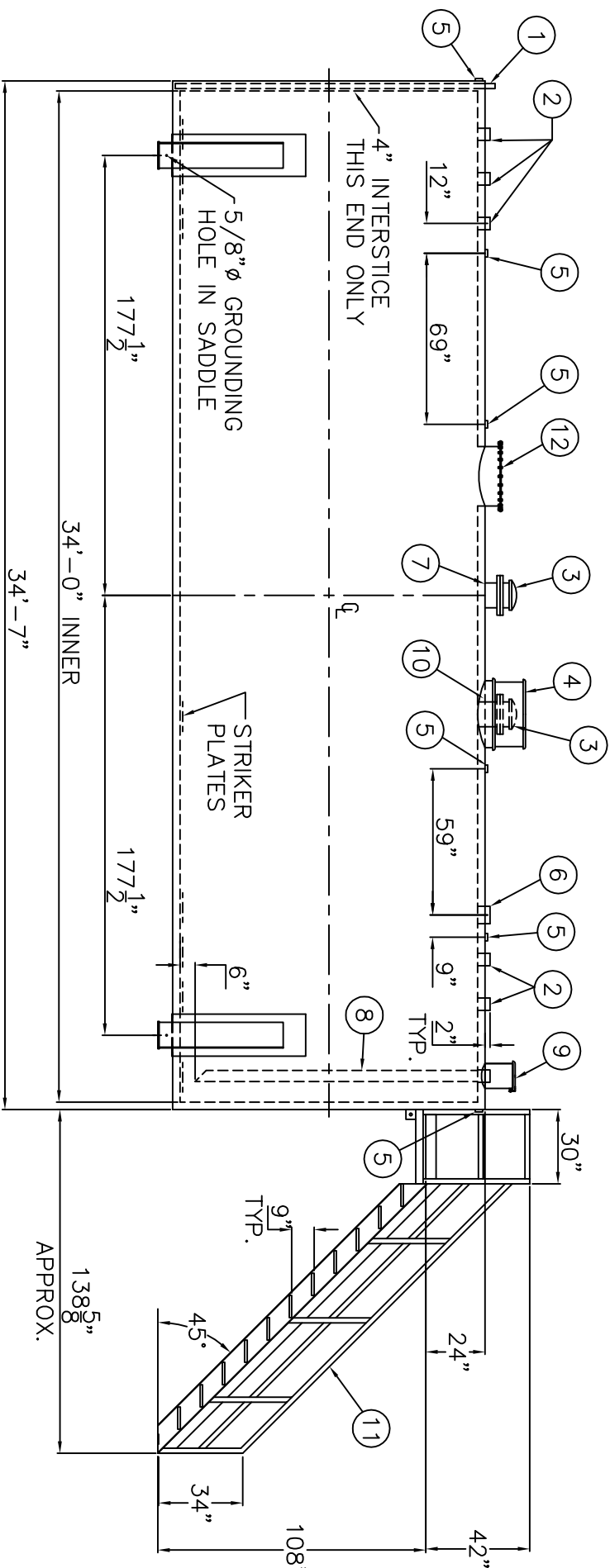


BASE PLATE DETAIL

DESIGN DATA	
CAPACITY : 20,000 GALLONS	
TYPE: FIREGUARD® CYLINDRICAL	
FIREGUARD® IS A TRADEMARK OF THE STEEL TANK INSTITUTE	
NO. REQ. --	
OPERATING PRESSURE – ATMOSPHERIC	
TANK MATERIAL – MILD CARBON STEEL	
THICKNESS – INNER – HEADS: 5/16", SHELL: 1/4" THICKNESS – OUTER – HEADS: 5/16", SHELL: 1/4" MIN. GAUGE OR THICKNESS (PER U.L. 2085)	
CONSTRUCTION – INNER – LAP WELD OUTSIDE ONLY CONSTRUCTION – OUTER – LAP WELD OUTSIDE ONLY	
TANK TEST – PER UL 2085	
INT. FINISH – NONE	
EXT. FINISH – SP-6 BLAST, FINISH PAINT WHITE	
LABEL– UL 2085 AND FIREGUARD® PER sti	

SHIP LOOSE

(2) 10" FLANGED THREADED EMERGENCY VENTS



SHIPMENT BANDING HOLES, (2) PER SADDLE TYP.
(2) 10'-6" ø x 6" HIGH SADDLES SEAL WELDED TO TANK

3" LIGHTWEIGHT INSULATION MATERIAL WITHIN INTERSTICE

ITEM	QTY	DESCRIPTION	ITEM	QTY	DESCRIPTION	ITEM	QTY	DESCRIPTION
1	1	2" MONITOR PIPE WITH MALE NPT END	7	1	10" RFSO 150# FLANGE THROUGH OUTER SHELL ONLY, MARK WITH SPECIAL WARNING LABEL INTERSTITIAL EMERGENCY VENT USE ONLY	11	1	24" WIDE x 108" STAIRS w/ 1" FIBERGLASS GRATING, BOLT TO TANK, PAINT: SAFETY YELLOW, SHIP LOOSE, INSTALLATION ON SITE BY OTHERS.
2	5	4" FEMALE FG COUPLING						
3	2	10" FLANGED EMERGENCY VENT	8	1	4" FEMALE FG COUPLING w/ 4" DROP PIPE TO WITHIN 6" OF THE BOTTOM OF THE TANK, MITER 45°	12	1	24" x 1/4" PLATE TIGHT BOLT MANWAY WITH 1/8" THICK NEO-CORK GASKET
4	1	EMERGENCY VENT PROTECTION HOOD						
5	6	2" FITTING THROUGH OUTER SHELL ONLY WITH CAST IRON PLUG-- MFG USE ONLY	9	1	FILL CONTAINMENT CHAMBER			
			10	1	10" RFSO 150# COUPLING -- FOR PRIMARY EMERGENCY VENT USE ONLY			
6	1	6" FEMALE FG COUPLING						

△

-

AREO-POWER®

PATENT NUMBER 5346093

20,000 GAL 120" ø CYL. FIREGUARD®

PATENT: 5,695,089 PATENT: 5,809,650

CUSTOMER:

PROJECT:

QUOTE NO:

SCALE: 1/4"=1'-0"

DATE:

DWG. BY:

CHK'D BY:

DWG. NO:

AP20000FC120CYL