

DESIGN DATA

| | |
|---|-----------------------------------|
| CAPACITY : | 10,000 GALLON |
| TYPE: | FIREGUARD® CYLINDRICAL |
| FIREGUARD® IS A TRADEMARK OF THE STEEL TANK INSTITUTE | |
| NO. REQ. -- | -- |
| OPERATING PRESSURE -- | ATMOSPHERIC |
| TANK MATERIAL -- | MILD CARBON STEEL |
| THICKNESS -- | INNER - HEADS: 5/16", SHELL: 1/4" |
| THICKNESS -- | OUTER - HEADS: 5/16", SHELL: 1/4" |
| MIN. GAUGE OR THICKNESS (PER U.L. 2085) | |
| CONSTRUCTION -- | INNER - LAP WELD OUTSIDE ONLY |
| CONSTRUCTION -- | OUTER - LAP WELD OUTSIDE ONLY |
| TANK TEST -- | PER UL 2085 |
| INT. FINISH -- | NONE |
| EXT. FINISH -- | SP-6 BLAST, FINISH PAINT WHITE |
| LABEL -- | UL 2085 AND FIREGUARD® PER st |

DIKE DESIGN DATA

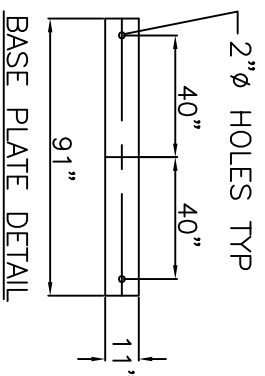
| | |
|------------------|-----------------------------|
| CAPACITY -- | 12,700 GALLONS |
| TANK MATERIAL -- | MILD CARBON STEEL |
| THICKNESS -- | ALL - 1/4" |
| CONSTRUCTION -- | WELDED INSIDE & OUTSIDE |
| FINISH -- | ALL - SAME AS TANK EXTERIOR |

NOTE: ALL DIMENSIONS APPROXIMATE

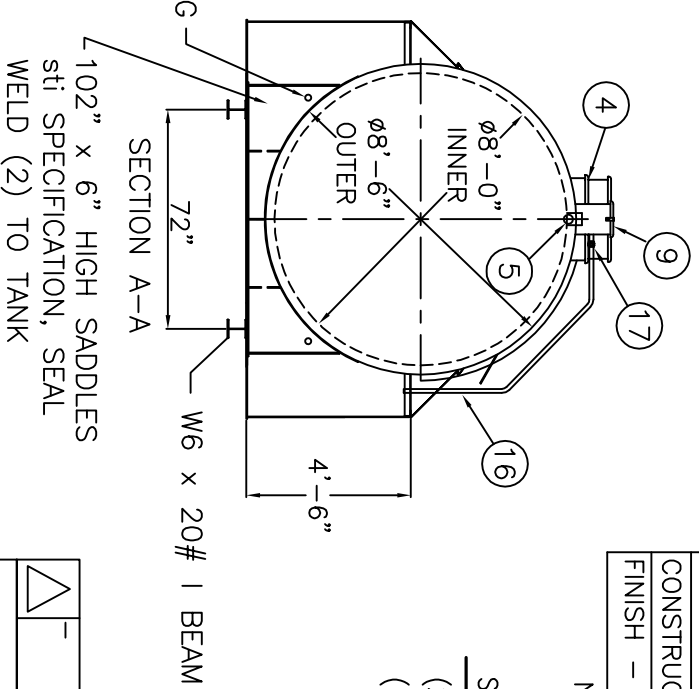
- SHIP LOOSE
- (2) 8" MALE THREADED EMERGENCY VENTS
- (1) VENT DEFLECTOR

NOTE: ALL RIGHTS RESERVED. THIS DRAWING MUST NOT BE REPRODUCED IN ANY FORM WITHOUT THE WRITTEN PERMISSION OF AREO-POWER®. AREO-POWER® SHALL BE RESPONSIBLE ONLY FOR ITEMS INDICATED ON THIS FABRICATION DRAWING UNLESS OTHERWISE NOTED. CUSTOMER IS RESPONSIBLE FOR VERIFYING CORRECTNESS OF SIZE AND LOCATION OF FITTINGS, ACCESSORIES, AND COATINGS SHOWN ON THIS DRAWING.

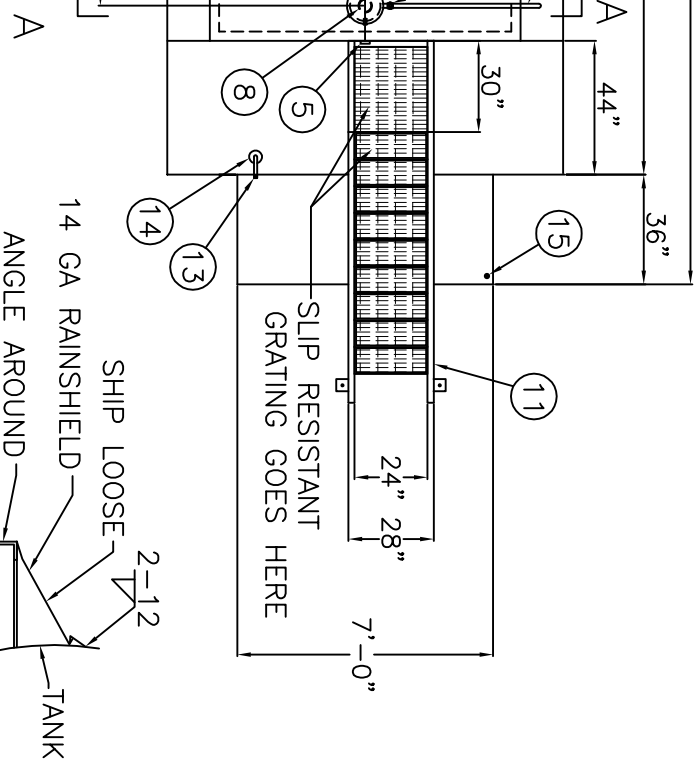
TOUCH UP OF FINISHED PAINT IS REQUIRED BY INSTALLATION CONTRACTOR. TOUCH UP PAINT SHIPPED WITH TANK.



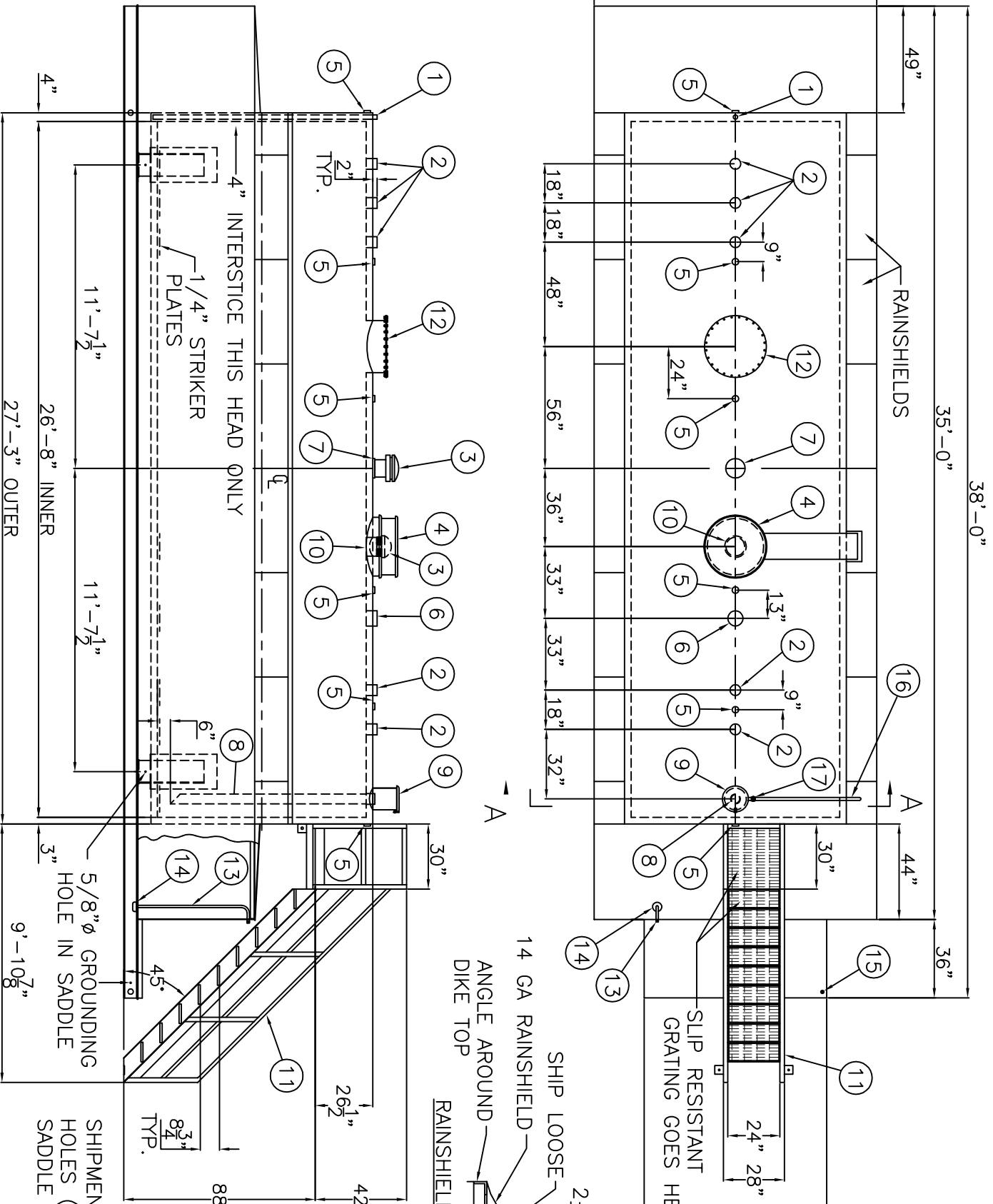
BASE PLATE DETAIL



SECTION A-A
102" x 6" HIGH SADDLES
st SPECIFICATION, SEAL
WELD (2) TO TANK



RAINSHIELD DETAIL



3" LIGHTWEIGHT INSULATION MATERIAL WITHIN INTERSTICE

| ITEM | QTY | DESCRIPTION | ITEM | QTY | DESCRIPTION | ITEM | QTY | DESCRIPTION |
|------|-----|--|------|-----|---|------|-----|--|
| 1 | 1 | 2" MONITOR PIPE WITH MALE NPT END | 7 | 1 | 8" FITTING THROUGH OUTER SHELL ONLY, MARK WITH SPECIAL WARNING LABEL INTERSTITIAL EMERGENCY VENT USE ONLY | 12 | 1 | 24" x 1/4" PLATE TIGHT BOLT MANWAY WITH 1/8" THICK NEO-CORK GASKET |
| 2 | 5 | 4" FEMALE FG COUPLING | 8 | 1 | 4" FEMALE FG COUPLING w/ 4" DROP PIPE TO WITHIN 6" OF THE BOTTOM OF THE TANK, MITER 45° | 13 | 1 | 3/4" PUMPOUT PIPE |
| 3 | 2 | 8" EMERGENCY VENT (SHIP LOOSE) | 9 | 1 | FILL CONTAINMENT CHAMBER | 14 | 1 | 3" PIPE CAP SUMP |
| 4 | 1 | EMERGENCY VENT PROTECTION HOOD & CHUTE | 10 | 1 | 8" FEMALE FG COUPLING (PRIMARY VENT USE) | 15 | 1 | 1/2" DRAIN FITTING |
| 5 | 6 | 2" FITTING THROUGH OUTER SHELL ONLY WITH CAST IRON PLUG - MFG USE ONLY | 11 | 1 | 24" WIDE x 88" STAIRS w/ 1" FIBERGLASS GRATING, BOLT TO TANK, PAINT: SAFETY YELLOW, SHIP LOOSE, INSTALLATION ON SITE BY OTHERS. | 16 | 1 | 1" OVER FLOW PIPE |
| 6 | 1 | 6" FEMALE FG COUPLING | | | | 17 | 1 | 1" PIPE UNION |

AREO-POWER ®

PATENT NUMBER 5346093

10,000 GAL 96" Ø CYL. FIREGUARD®

PATENT: 5,695,089 PATENT: 5,809,650

CUSTOMER:

PROJECT:

QUOTE NO:

SCALE: DATE: DWG. BY: DWG. NO: CHK'D BY:

3/16"=1'-0" AP10000FG96DIKE