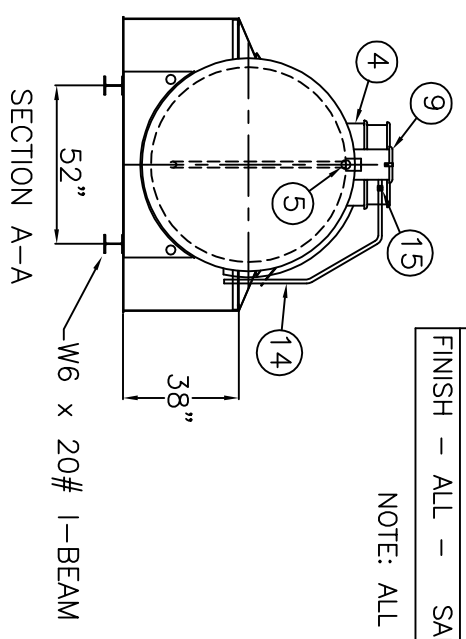
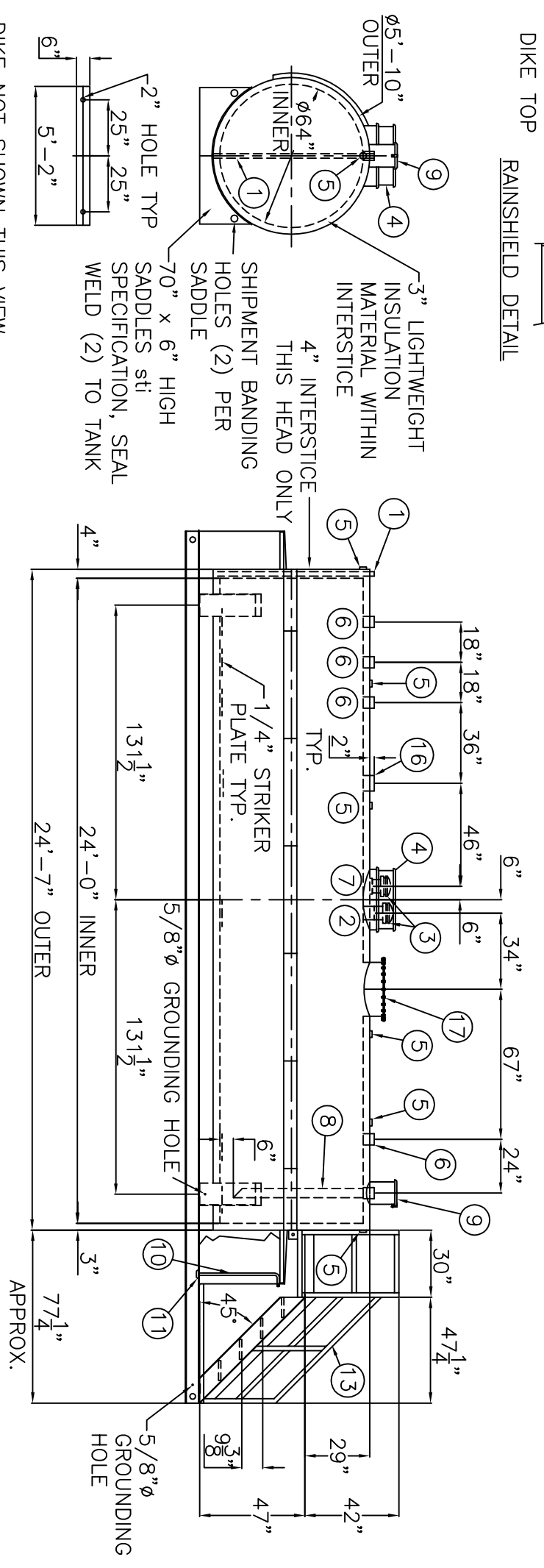
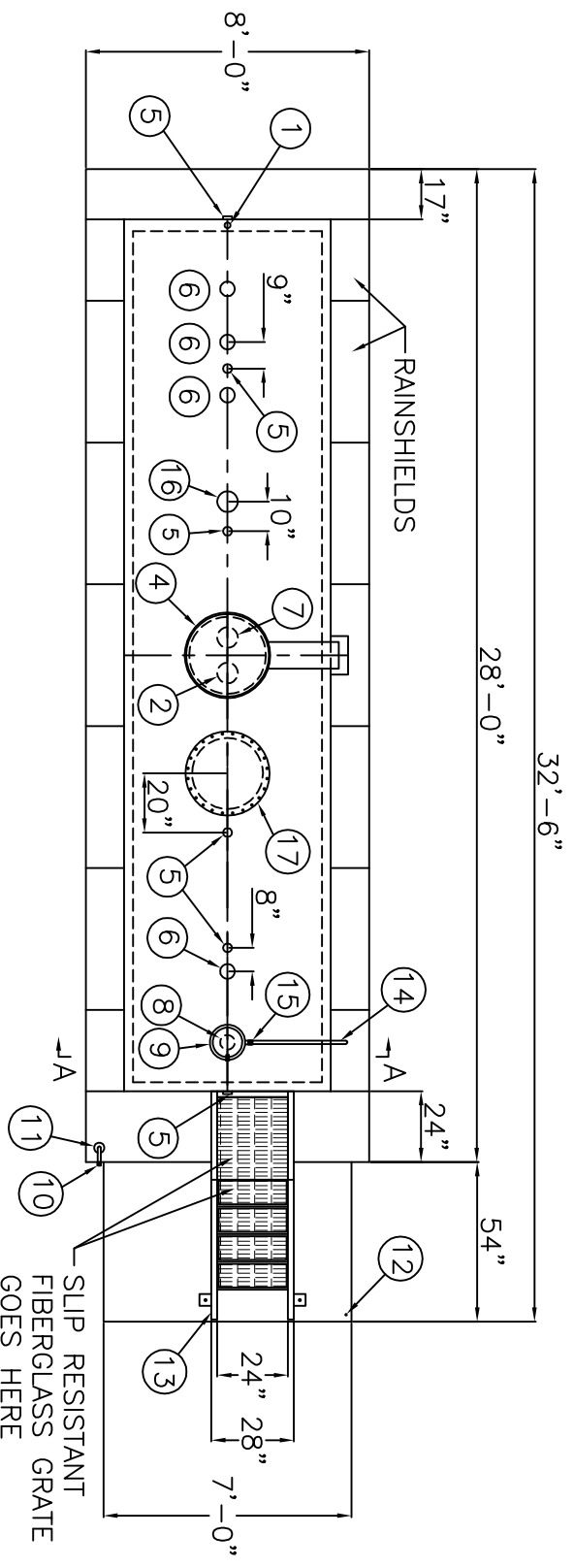


NOTE: ALL RIGHTS RESERVED. THIS DRAWING MUST NOT BE REPRODUCED IN ANY FORM WITHOUT THE WRITTEN PERMISSION OF AREO-POWER®. AREO-POWER® SHALL BE RESPONSIBLE ONLY FOR ITEMS INDICATED ON THIS FABRICATION DRAWING UNLESS OTHERWISE NOTED. CUSTOMER IS RESPONSIBLE FOR VERIFYING CORRECTNESS OF SIZE AND LOCATION OF FITTINGS, ACCESSORIES, AND COATINGS SHOWN ON THIS DRAWING.

TOUCH UP OF FINISHED PAINT IS REQUIRED BY INSTALLATION CONTRACTOR. TOUCH UP PAINT SHIPPED WITH TANK.

SHIP LOOSE  
 (2) 6" MALE THREADED EMERGENCY VENTS  
 (1) VENT DEFLECTOR

SHIP LOOSE  
 14 GA RAINSHIELD  
 ANGLE AROUND  
 DIKE TOP  
 RAINSHIELD DETAIL



DIKE NOT SHOWN THIS VIEW

**DESIGN DATA**

CAPACITY : 4,000 GALLONS  
 TYPE: FIREGUARD® CYLINDRICAL  
 FIREGUARD® IS A TRADEMARK OF WITH THE STEEL TANK INSTITUTE  
 NO. REQ. --  
 OPERATING PRESSURE -- ATMOSPHERIC  
 TANK MATERIAL -- MILD CARBON STEEL  
 THICKNESS -- INNER -- HEADS AND SHELL -- 7 GAUGE  
 THICKNESS -- OUTER -- HEADS AND SHELL -- 7 GAUGE  
 MIN. GAUGE OR THICKNESS (PER U.L. 2085)  
 CONSTRUCTION -- INNER -- LAP WELD OUTSIDE ONLY  
 CONSTRUCTION -- OUTER -- LAP WELD OUTSIDE ONLY  
 TANK TEST -- PER UL 2085  
 INT. FINISH -- NONE  
 EXT. FINISH -- SP-6 BLAST, FINISH PAINT WHITE  
 LABEL-- UL 2085 AND FIREGUARD® PER stl

**DIKE DESIGN DATA**

CAPACITY -- 5,300 GALLONS  
 TANK MATERIAL -- MILD CARBON STEEL  
 THICKNESS -- ALL -- 1/4"  
 CONSTRUCTION -- WELDED INSIDE & OUTSIDE  
 FINISH -- ALL -- SAME AS TANK EXTERIOR

NOTE: ALL DIMENSIONS APPROXIMATE

ITEM	QTY	DESCRIPTION	ITEM	QTY	DESCRIPTION	ITEM	QTY	DESCRIPTION
1	1	2" INTERSTITIAL MONITOR PIPE - MALE NPT END	7	1	6" FITTING THROUGH OUTER SHELL ONLY, MARK WITH SPECIAL WARNING LABEL INTERSTITIAL EMERGENCY VENT USE ONLY	13	1	24" WIDE x 47" HIGH BOLT TO TANK STAIRS & 24" WIDE x 30" LONG PLATFORM w/ 1" FIBERGLASS GRATING, SHIP LOOSE, INSTALLATION ON SITE BY OTHERS.
2	1	6" FEMALE FIREGUARD COUPLING - FOR PRIMARY EMERGENCY VENT USE	8	1	4" FEMALE FIREGUARD COUPLING w/ 4" DROP PIPE TO WITHIN 6" OF THE BOTTOM OF THE TANK WITH 45° MITER	14	1	1" OVER FLOW PIPE
3	2	6" EMERGENCY VENT (SHIP LOOSE)				15	1	1" PIPE UNION
4	1	VENT DEFLECTOR & CHUTE ASSEMBLY	9	1	FILL CONTAINMENT CHAMBER	16	1	6" FEMALE FIREGUARD COUPLING
5	6	2" FITTING THROUGH OUTER SHELL ONLY WITH CAST IRON PLUG- MFG USE ONLY	10	1	3/4" PUMP/OUT PIPE	17	1	24"Ø MANWAY w/ 1/8" NEO-CORK GASKET
6	4	4" FEMALE FIREGUARD COUPLING	11	1	3" PIPE CAP SUMP			
			12	1	1/2" DRAIN FITTING			

**AREO-POWER®**  
 U.S. PATENT # 4895272 CANADIAN PATENT APPLIED FOR  
 4,000 GAL 64"Ø CYL. FIREGUARD®  
 PATENT: 5,695,089 PATENT: 5,809,650  
 CUSTOMER:  
 PROJECT:  
 QUOTE NO:  
 SCALE: DATE: DIV. BY: CHK'D BY:  
 3/16" = 12" AP4000FC64DIKE