

NYC MODEL

COMPANY NAME _____

APPROVED BY (PLEASE PRINT) _____

APPROVAL SIGNATURE _____

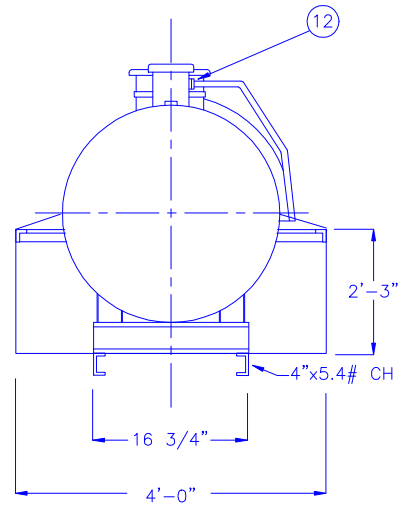
DATE _____ CONTRACT NO. _____

TANK TO BE INSTALLED AS PER NYC BUILDING CODE ARTICLE 17- FUEL OIL EQUIPMENT, C26-1416.

- NOTES :
1. SHELL: 1/4" , HEAD: 5/16" CONTAINMENT: 10 GAUGE
 2. CONTAINMENT CAPACITY = 150% TANK CAPACITY
 3. MATERIAL - MILD CARBON STEEL.
 4. TEST - 30 PSIG (HYDRO).
 5. ENTIRE UNIT UL LISTED, NOT JUST PRIMARY TANK.
 6. PAINT - RED PRIMER (STANDARD).
 7. FOR FURTHER INFORMATION CALL 1-800-242-2736 OR FAX (516) 366-0905.

ITEM #	DESCRIPTION
1	1" FILL BOX OVERFLOW PIPE
2	PUMP PLATFORM W/2" LIP
3	1/2" DRAIN FITTING W/ PLUG
4	2" VENT FITTING
5	4" - 8 oz FLNGD EMERGENCY VENT SHIPPED LOOSE
6	VENT DEFLECTOR ASSEMBLY SHIPPED LOOSE
7	2" FCPLGS
8	3" FITTING
9	OVERFILL CONTAINMENT CHAMBER
10	STAIRS, PLATFORM AND HANDRAIL- DESIGNED TO OSHA REQUIREMENTS SHIPPED LOOSE
11	3/4" PUMPOUT PIPE W/ 3" PIPE CAP SUMP
12	1" PIPE UNION

SECTION A-A



All rights reserved. This drawing or any part thereof must not be reproduced in any form without the written permission of Areo-Power Unitized Fueler, Inc.

AREO-POWER®

TITLE		REV #	REV DATE
300 GAL. NYC FUELER			
U.S. PATENT # 4895272		CANADIAN PATENT APPLIED FOR	
SCALE	DATE	DRAWN BY	DWG. NO.
NONE	3/28/91	JF	UL3C38NY