

ITEM	DESCRIPTION
①	2" NORMAL VENT FITTING
②	6"-8 OZ. EMERGENCY VENT - SHIP LOOSE
③	EMERGENCY VENT OVERFLOW CHUTE
④	VENT DEFLECTOR ASSEMBLY
⑤	2" FITTING
⑥	_____
⑦	1" OVERFLOW PIPE
⑧	1" PIPE UNION
⑨	2" FILL FITTING
⑩	FILL CONTAINMENT CHAMBER
⑪	_____
⑫	_____
⑬	_____
⑭	_____
⑮	_____
⑯	1 1/2" L (2)

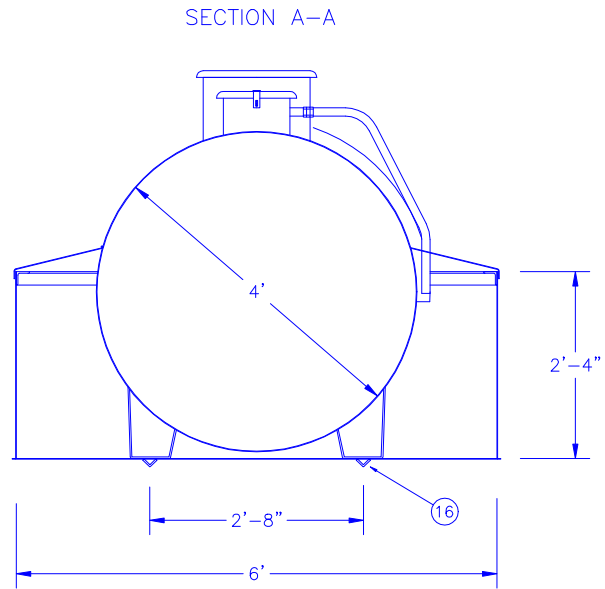
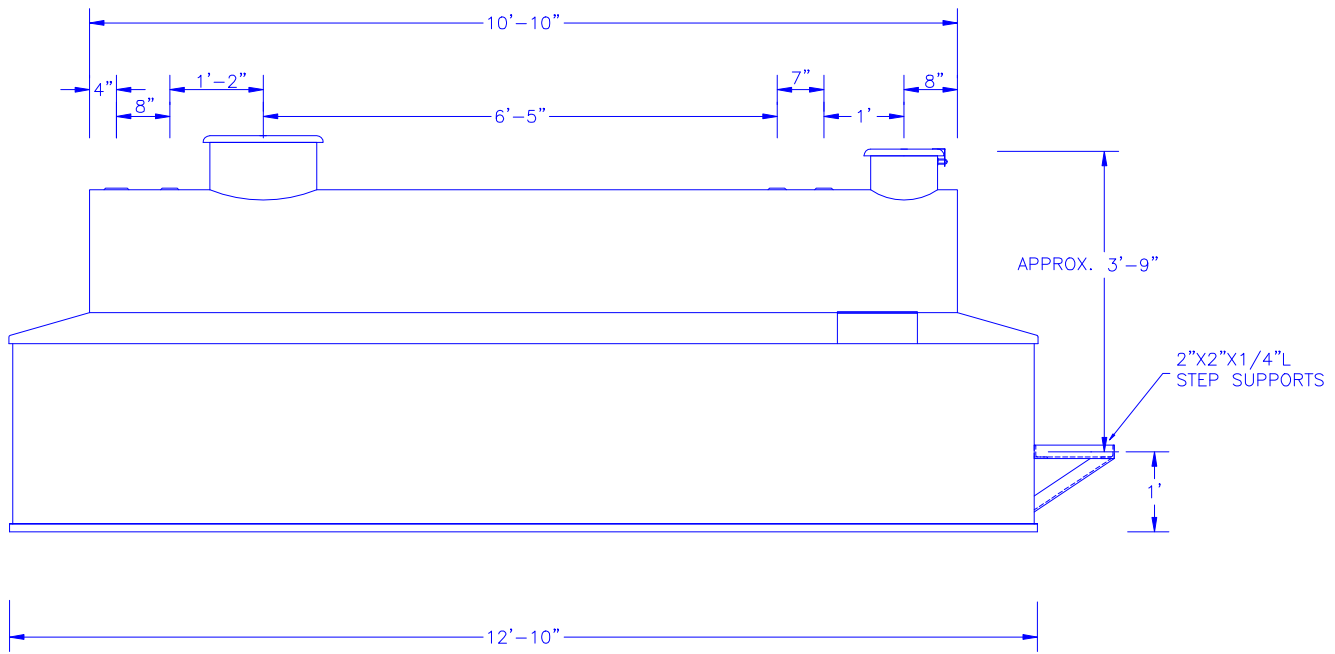
AUTHORIZATION

COMPANY NAME _____

APPROVED BY (PLEASE PRINT) _____

APPROVAL SIGNATURE _____

DATE _____ CONTRACT NO. _____



- NOTES
1. PRIMARY TANK:
SHELL - 10 GA. HEAD - 10 GA.
CONTAINMENT: 7 GA.
 2. MATERIAL - MILD CARBON STEEL
 3. TEST AT 5-7 PSIG.
 4. ENTIRE UNIT UL LISTED.
 5. EXTERIOR FINISH - _____
 6. ALL DIMENSIONS ARE APPROXIMATE

All rights reserved. This drawing or any part thereof must not be reproduced in any form without the written permission of Areo-Power Unitized Fueler, Inc.

AREO-POWER®

TITLE 1000 GAL. AREO-POWER TANK MODEL 1072		REV # 1	REV DATE 4/14/98
U.S. PATENT # 4895272		CANADIAN PATENT APPLIED FOR	
SCALE 1/2"=1'	DATE 4/15/94	DRAWN BY JF	DWG. NO. APB561