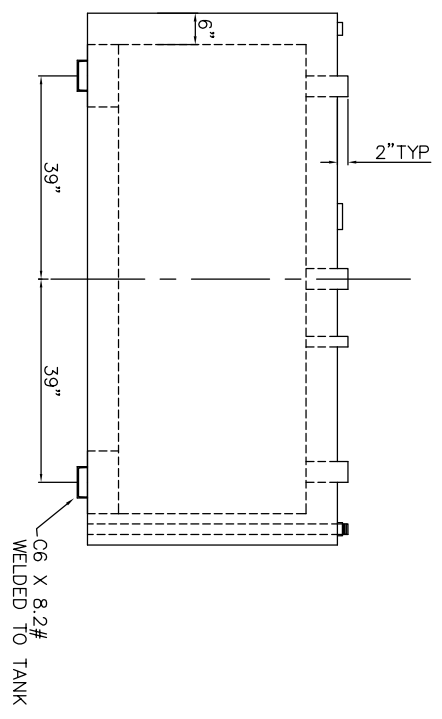
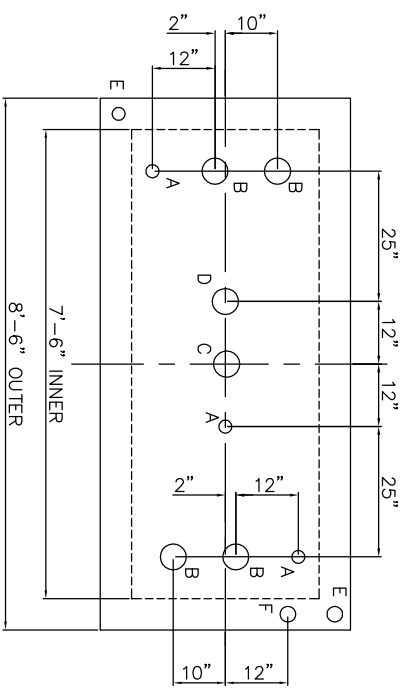
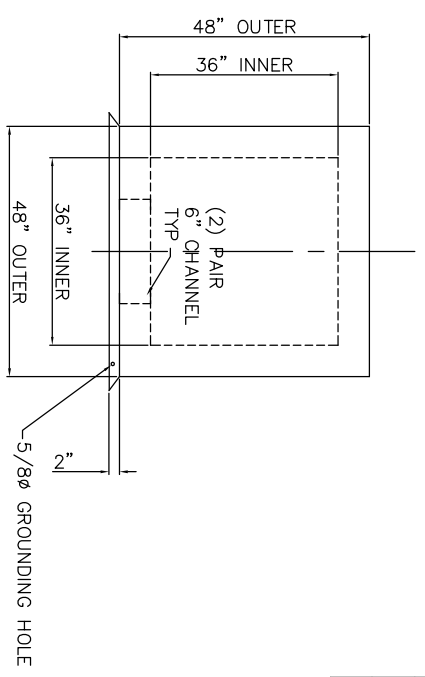


NOTE: ALL RIGHTS RESERVED. THIS DRAWING MUST NOT BE REPRODUCED IN WHOLE OR IN PART WITHOUT THE PERMISSION OF AREO-POWER®. AREO-POWER SHALL BE RESPONSIBLE ONLY FOR ITEMS INDICATED ON THIS FABRICATION DRAWING UNLESS OTHERWISE NOTED. THE FABRICATOR SHALL BE RESPONSIBLE FOR VERIFYING CORRECTNESS OF SIZE AND LOCATION OF FITTINGS, ACCESSORIES, AND COATINGS SHOWN ON THIS DRAWING. TOUCH UP OF FINISHED PAINT IS REQUIRED BY INSTALLATION CONTRACTOR. TOUCH UP PAINT SHIPPED WITH TANK.

SHIP LOOSE  
 (2) 4" MALE THREADED EMERGENCY VENTS



6" LIGHTWEIGHT INSULATION MATERIAL WITHIN INTERSTICE



NOTES:  
 STRIKER PLATES ARE NOT SUPPLIED ON FIREGUARDS® UNLESS SPECIFIED

**DESIGN DATA**

CAPACITY :	500 GALLON
TYPE :	FIREGUARD® RECTANGULAR FIREGUARD® IS A TRADEMARK OF WITH THE STEEL TANK INSTITUTE
NO. REQ. :	--
OPERATING PRESSURE :	ATMOSPHERIC
TANK MATERIAL :	MILD CARBON STEEL
THICKNESS - INNER :	7 GAUGE
THICKNESS - OUTER :	7 GAUGE
MIN. GAUGE OR THICKNESS (PER U.L. 2085)	
CONSTRUCTION - INNER :	LAP WELD OUTSIDE ONLY
CONSTRUCTION - OUTER :	LAP WELD OUTSIDE ONLY
TANK TEST :	PER UL 2085

INT. FINISH - NONE

EXT. FINISH - SP-6 BLAST, FINISH PAINT WHITE

LABEL - UL 2085 AND FIREGUARD® PER st:

**LEGEND**

A	2" FEMALE FIREGUARD COUPLING
B	4" FEMALE FIREGUARD COUPLING
C	4" FEMALE FIREGUARD COUPLING - FOR PRIMARY EMERGENCY VENT USE ONLY
D	4" FITTING THROUGH OUTER SHELL ONLY - INTERSTITIAL EMERGENCY VENT USE ONLY
E	2" FITTING THROUGH OUTER SHELL ONLY WITH CAST IRON PLUG - FOR MFG USE ONLY
F	2" INTERSTITIAL MONITOR PIPE - MALE NPT END
G	-

**AREO-POWER®**

U.S. PATENT # 4895272      CANADIAN PATENT APPLIED FOR

**500 GAL REC. FIREGUARD®**

PATENT: 5,695,089      PATENT: 5,809,650

CUSTOMER: \_\_\_\_\_

PROJECT: \_\_\_\_\_

QUOTE NO: \_\_\_\_\_      CHECK BY: \_\_\_\_\_

SCALE: 1/2"=1'-0"      DATE: \_\_\_\_\_      DWG. BY: \_\_\_\_\_      DATE: \_\_\_\_\_

AP500FGREC